



**Premium Office
Blinds**

Cortina Collection

BLACKOUT

Shades Of Yellow
www.shades-of-yellow.com



MANILA
-01



MANILA
-02



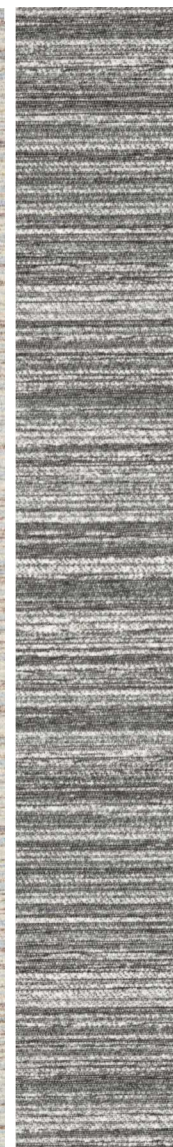
MANILA
-03



MANILA
-04



MANILA
-05



MANILA
-06

SPECIFICATIONS

Composition - PES 43%/Acryl 57% | Width - 3.0m
Weight - 0.52mm (+-10%) | Thickness - 476 g/Sqm (+-10%)

BLACKOUT COLLECTION
SAN DIAGO



SAN
DIAGO-01

SAN
DIAGO-02

SAN
DIAGO-03

SAN
DIAGO-04

SAN
DIAGO-05

SAN
DIAGO-06

SPECIFICATIONS

Composition - PES 43%/Acryl 57% | **Width** - 3.0m
Weight - 0.52mm (+10%) | **Thickness** - 476 g/Sqm (+10%)

BLACKOUT COLLECTION
BUKHARA



BUKHARA-01



BUKHARA-02



BUKHARA-03



BUKHARA-04

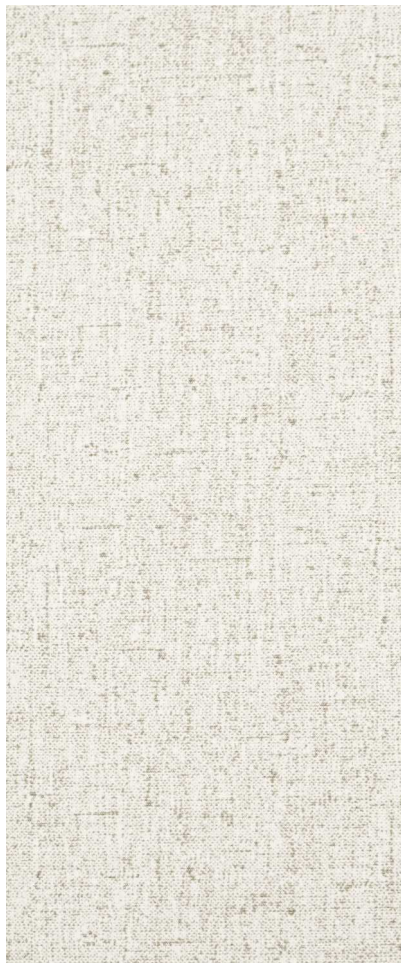
SPECIFICATIONS

Composition - PES 43%/Acryl 57% | **Width** - 3.0m
Weight - 0.52mm (+-10%) | **Thickness** - 476 g/Sqm (+-10%)

BLACKOUT COLLECTION
SANTORINI



**PVC
FREE**



SANTORINI 01

Weight - 320 g/m²,
Thickness - 0.45mm (approximate),
care instruction - spongeable,
transparency degree - blackout,
suitable for moist atmosphere - yes
moisture shrinkage (%) - warp/weft : less than 0.5,
Light fastness (window side) - ≥ 6 ,
Rubbing fastness - 4-5 depending upon color,
Radiation Rate - DIN EN 410
available on request



SANTORINI 02



SANTORINI 03



SANTORINI 04



SANTORINI 05



SANTORINI 06



SANTORINI 07

SPECIFICATIONS

Composition - 100% Polyester | **Width** - 2.40 mtr

BLACKOUT COLLECTION
DUBLIN



DUBLIN 05

Weight - 493.6 g/m² +/- 5%
Thickness - 0.64 to 0.68mm



DUBLIN 01



DUBLIN 02



DUBLIN 03



DUBLIN 04



SPECIFICATIONS

Composition - 100% Polyester | Width - 2.8 m

SOY



SIMPLY TAUPE

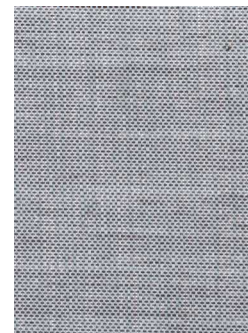
Wight - 380g/m2,
Tickness - 0.61mm,
Care instruction - Spongable
Suitable for moist atmosphere - yes,
Moisture shrinkage (%) - warp/weft: < 0.5,
Light fastness (window side) - > 6,
Rubbing fastness - > 4-5



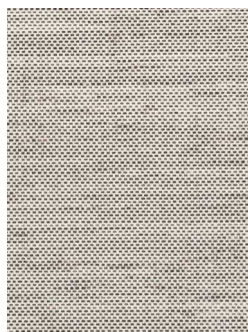
LIGHT SAGE



BLUE HAZE



DUSTY BLUE



CASHMERE TOUCH



ROSEWOOD



NORDIC SAND



WALNUT BROWN

SPECIFICATIONS

Composition - 100% polyester | Width - 2.50 mtr,

BLACKOUT COLLECTION
CANBERRA



CANBERRA 02

Weight - 285.1 g/m², (+/- 5%)
Thickness - 0.4mm



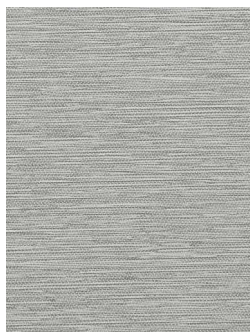
CANBERRA 01



CANBERRA 03



CANBERRA 04



CANBERRA 05



CANBERRA 06



SPECIFICATIONS

Composition - PES 47% / ACRYL 53% | Width - 2.80 mtr



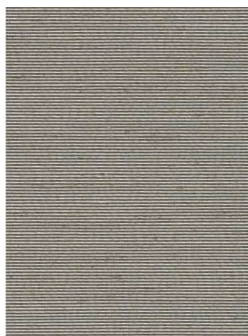
TOKYO - 03



TOKYO - 01



TOKYO - 02



TOKYO - 04

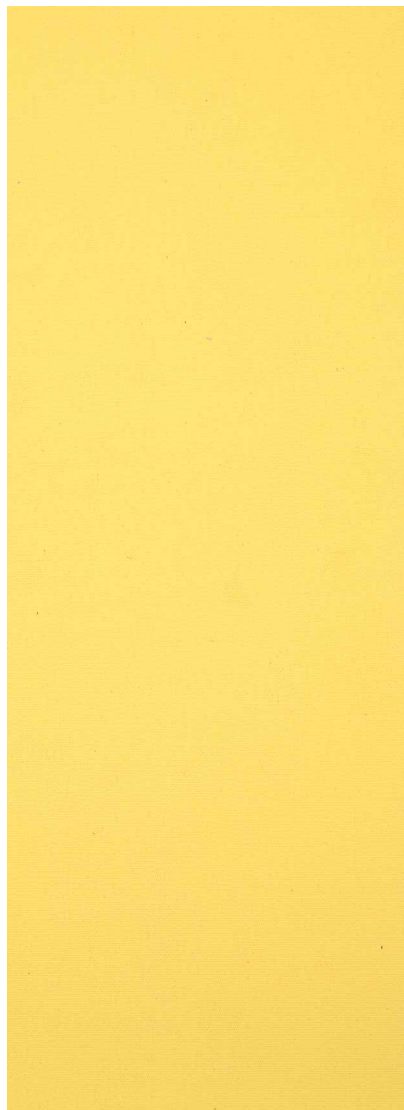
Weight - 379 g/m²
Thickness - 0.49mm
Color Fastness - above 4

SPECIFICATIONS

Composition - 100% Polyester | **Width** - 2.80 mtr

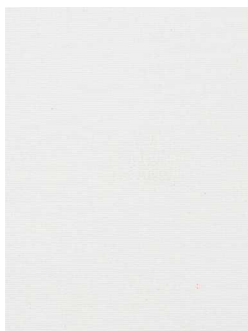
BLACKOUT COLLECTION

FLORIDA

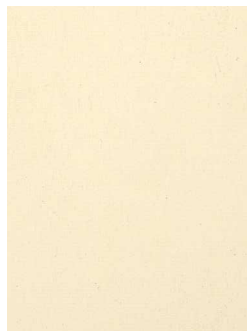


FLORIDA 05

Weight - 360 (G/sqm) (+/-10%)
Thickness - 0.35mm (+/-10%)
Flammability - NFPA701



FLORIDA 01



FLORIDA 02



FLORIDA 03



FLORIDA 04



FLORIDA 06



FLORIDA 07

SPECIFICATIONS

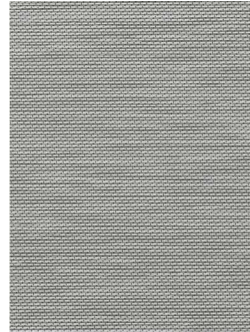
Composition - PES 32.6 / ACRYL 67.4 | **Width** - 3.0 m



AJMER SAND



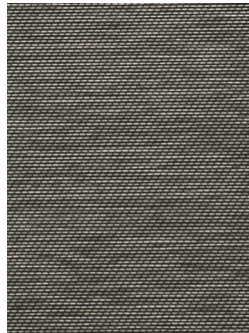
AJMER KHAKI



AJMER L GREY



AJMER MOCHA



AJMER WOOD



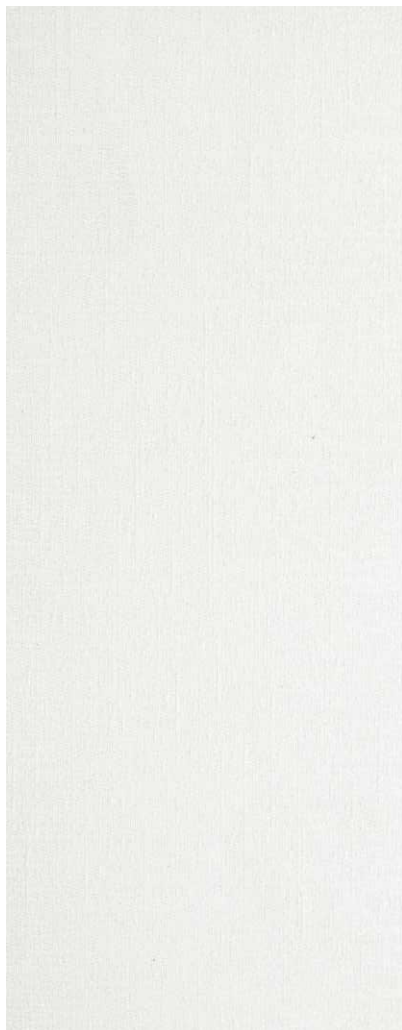
AJMER ASH

Weight - 340g / sqm (+5%)
Thickness - 0.56mm (+5%)
Solar reflectance - 49.5%
Solar absorptance - 50%
Solar transmittance - 0.2%
Ultra violet blocking - UV-R : 99.9% /
UV-A : 99.9% / UV-B:99.9%
Ultra violet protection factor - UDF:50+ /
UV-A:0.1%/UV-B:0.1
Colorfastness gray scale - 4.5
Tensile strength - N/5mm WARP:397/
WEFT:5314.8
Tearing strength - N Warp :13/ Weft: 27

SPECIFICATIONS

Composition - Polyester 100%

Width - 2.80 mtr



LUGANO 01

Weight - 360gsm +- 5%
Thikness - 0.60 +- 0.05mm
Color fastness >- 3.5 grade
Coating process - Foam Coating



LUGANO 02



LUGANO 03



LUGANO 04

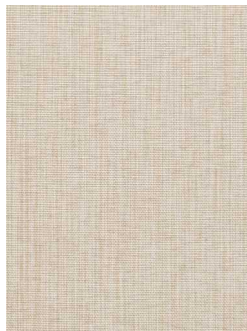
SPECIFICATIONS

Composition - 100% Polyester | Width - 2.80 m



INDIGO

FINISH - Blackout Coated
Cleaning - Damp cloth
Shrinkage - Less Than 1 %
Weight - 445g/m²
Thickness - 5mm
Light fastness - =greater than 4
Suitable for moist Condition - Yes
FR - Yes



SAND



CLAY



ASH



COFFEE



FOSSIL

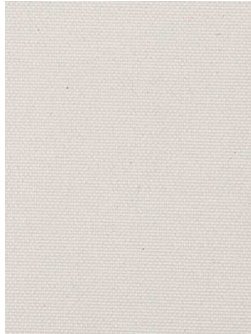


SLATE

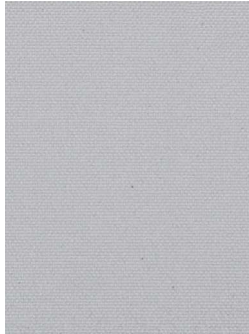
SPECIFICATIONS

Composition - Base Material - 100% Polyester | **Width** - 2.80 m

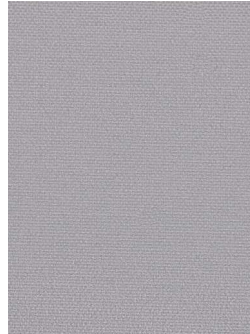
BLACKOUT COLLECTION
VENICE



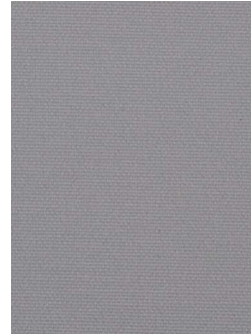
V-001 Sheer Ice



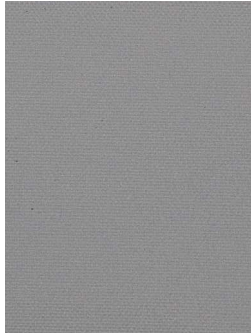
V-002 Silver Ray



V-003 Smoky Gray



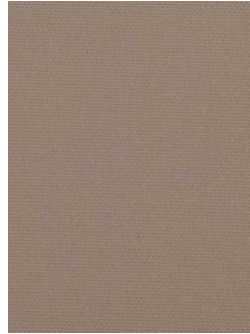
V-004 Antique Metal



V-005 Pigeon Gray



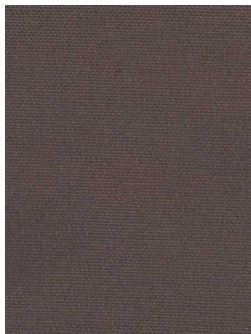
V-006 Seal Gray



V-007 Light Alder



V-008 Iced Coffee



V-009 Weathered Wine



V-010 Royal Plum



V-011 Sundried raisin

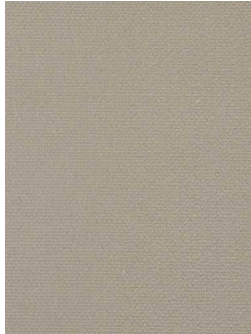
Weight - 485g/m (+/- 5%)
Thickness - 0.5mm

SPECIFICATIONS

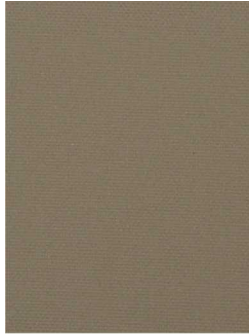
Composition - PES 37% / ACRYL RESIN 63% | Width - 2.50 mtr

BLACKOUT COLLECTION

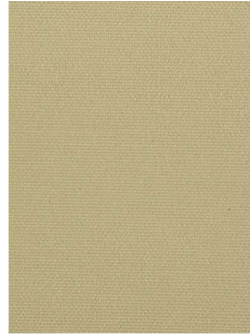
VENICE



V-012 Soft Essence



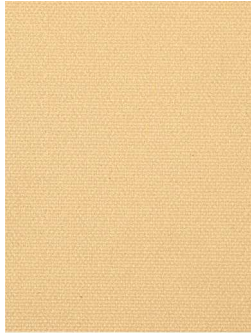
V-013 Sailor's Gray



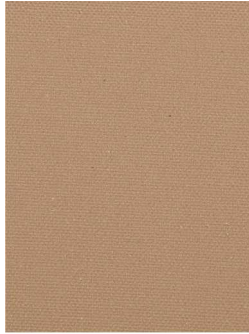
V-014 Dusted Ginger



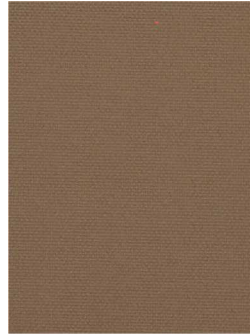
V-015 Oriental Poppies



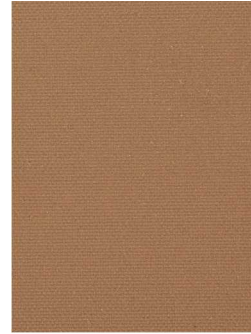
V-016 Tender Fawn



V-017 Lucid Almond



V-018 Chestnut Delight



V-019 Lankan Cinnamon



V-020 Warm Tan

Weight - 485g/m (+/- 5%)
Thickness - 0.5mm

SPECIFICATIONS

Composition - PES 37% / ACRYL RESIN 63% | **Width** - 2.50 mtr

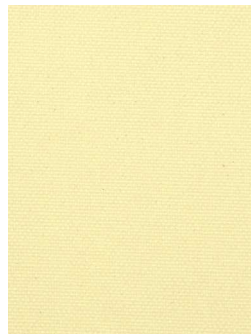
BLACKOUT COLLECTION
VENICE



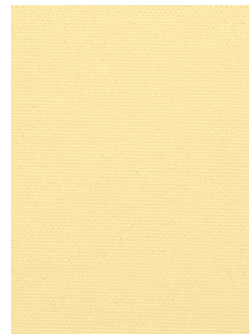
V-021 Swan Wing



V-022 French Vanilla



V-023 Vivid Cream



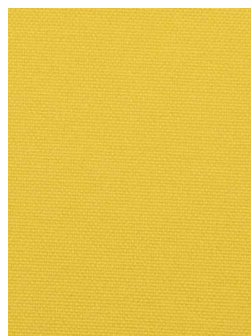
V-024 Soft Beige



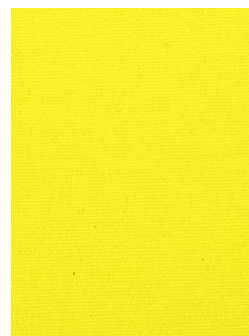
V-025 Sahara Sand



V-026 Bold Bumblebee



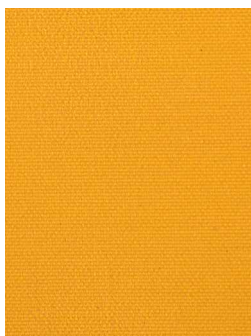
V-027 Tender Honey



V-028 Lemon Trail



V-029 Mustard Duet



V-030 Pale Sunset



V-031 Orange Crush



V-032 Warm Tangerine

SPECIFICATIONS

Composition - PES 37% / ACRYL RESIN 63% | Width - 2.50 mtr

BLACKOUT COLLECTION
VENICE



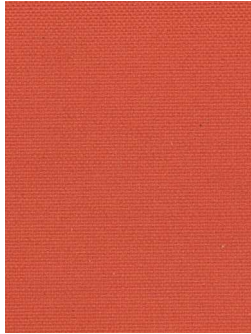
V-033 Autumn Day



V-034 Morning Rose



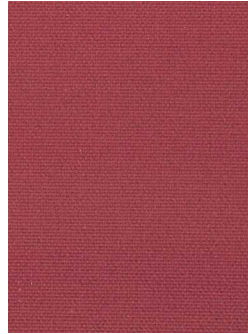
V-035 Truly Pink



V-036 Sunset Peach



V-037 Cuban Coral



V-038 Mature Mulberry



V-039 Absolute Red

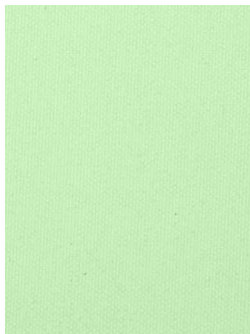


V-040 Orchid Vase

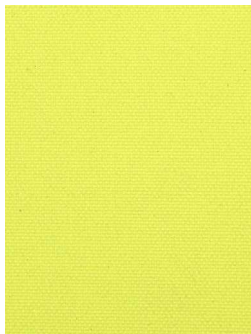
SPECIFICATIONS

Composition - PES 37% / ACRYL RESIN 63% | Width - 2.50 mtr

BLACKOUT COLLECTION
VENICE



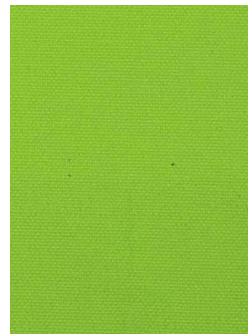
V-041 Frosty Leaf



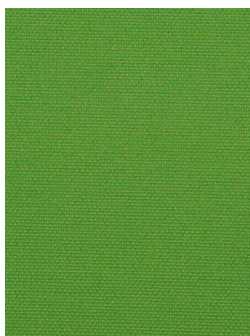
V-042 Valley Flower



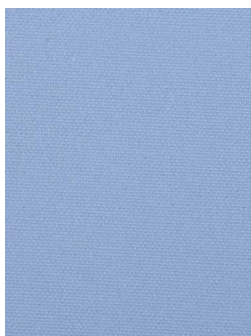
V-043 Summer Breeze



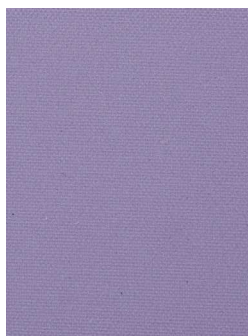
V-044 Spring Green



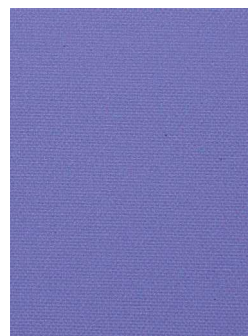
V-045 Mountain Meadows



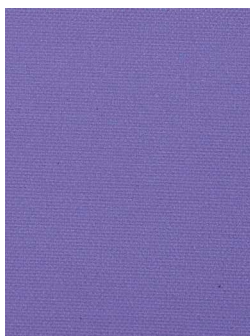
V-046 Pellucid Pebble



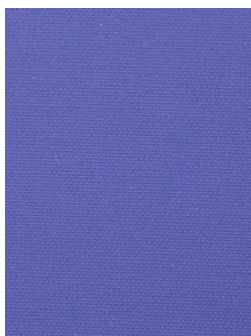
V-047 Wild Berries



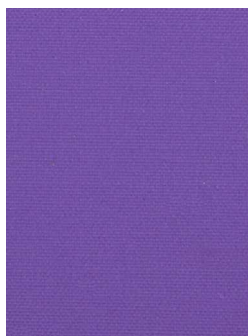
V-048 Forest Iris



V-049 Midnight Amethyst



V-050 Alaska Blue



V-051 Intense Lilac



V-052 Moody Blue

SPECIFICATIONS

Composition - PES 37% / ACRYL RESIN 63% | Width - 2.50 mtr

BLACKOUT COLLECTION
AMAZON



BLACKOUT



PANEL BLIND



ROLLER BLINDS



AMAZON 03



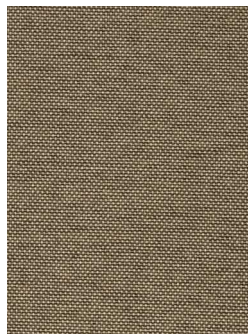
AMAZON 01



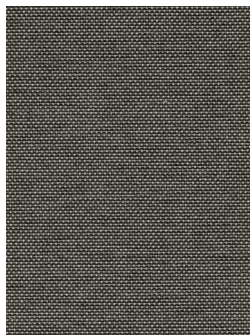
AMAZON 02



AMAZON 04



AMAZON 05



AMAZON 06

Weight - 485 g/m² +/- 5%
Thickness - 0.50mm

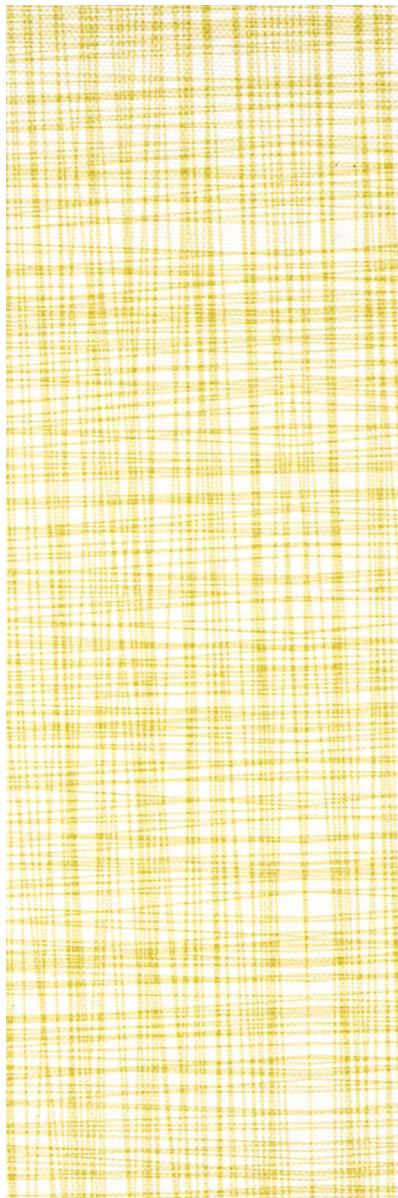
SPECIFICATIONS

Composition - PES 37% / ACRYL RESIN 63% | Width - 2.50 m



NATAL - 01

Weight - 360g/m² (+/- 5%)
Thickness - 0.35mm +/- 0.05mm
Light Transmittance - 0%
Coating Type - Pigmented Acrylic



NATAL - 02



NATAL - 03

SPECIFICATIONS

Composition - 100% Polyester | Width - 2.90 m



NATAL - 04

Weight - 360g/m (+/- 5%)
Thickness - 0.35mm +/- 0.05mm
Light Transmittance - 0%
Coating Type - Pigmented Acrylic



NATAL - 05



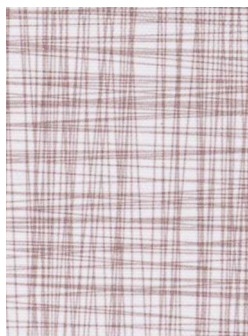
NATAL - 06



NATAL - 07



NATAL - 08



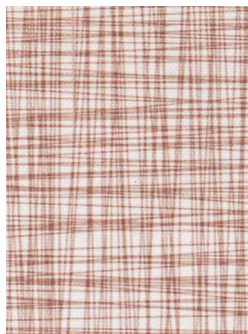
NATAL - 09



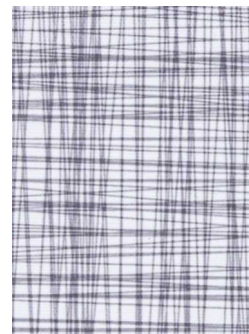
NATAL - 10



NATAL - 11



NATAL - 12

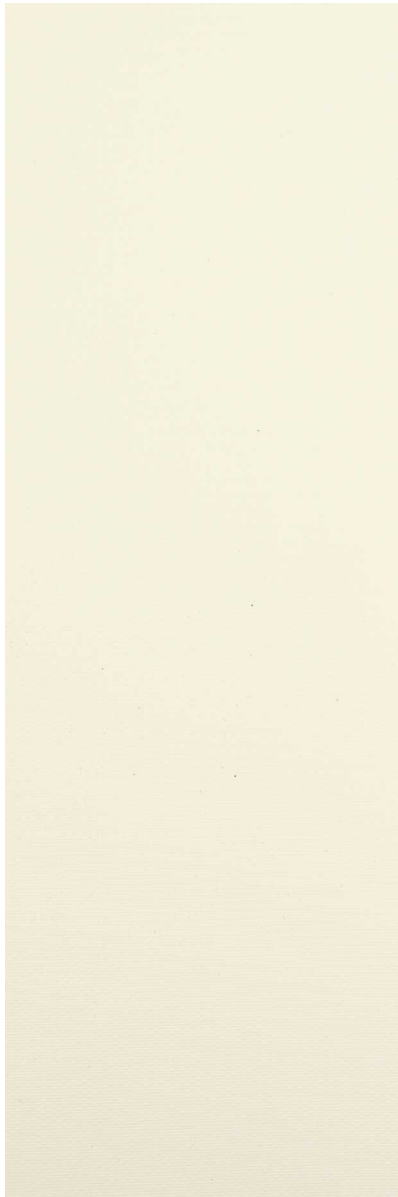


NATAL - 13



R 2001

Thickness - 0.34 mm
Weight - 470 g/m²
Coating Type - Laminated
Light Transmittance - 0%
Maximum Width - 2.70 M
Care Instruction - Cleanable with
mild detergent
Fire Retardency - CCC-C-521E &
NFPA NO 701



R 2002



R 2003

SPECIFICATIONS

Composition - PVC /GLASS FIBRE | Width - 2.50 m



7001

Nominal Weights - 320gsm - 360 gsm
Nominal thickness - 0.32mm - 0.35mm
PVC & Lead free
Light Fastness: Minimum 5 (Blue Scale)
Tested to ISO 105-B02:2014



7002



7004

SPECIFICATIONS

Composition - 100% Polyester with acrylic coating | **Width** - 2.50 m, 3.0M